

The next step starts with TZIELD

Tziēld[®]
(teplizumab-mzwv)
Injection | 2mg/2mL

TZIELD is FDA-approved for appropriate adults and children 8 years of age and up.*

***What is TZIELD?**

TZIELD is a prescription medicine used to delay the onset of Stage 3 type 1 diabetes, which is when your body can't make enough insulin on its own and may require insulin injections. TZIELD is for **adults and children 8 years of age and older who have Stage 2 type 1 diabetes**. This means that they have tested positive for 2 or more type 1 diabetes-related autoantibodies, have abnormal blood sugar levels, and do not have type 2 diabetes.

It is not known if TZIELD is safe and effective in children under 8 years of age.

Please see additional Important Safety Information throughout and full [Prescribing Information](#), including [Medication Guide](#).



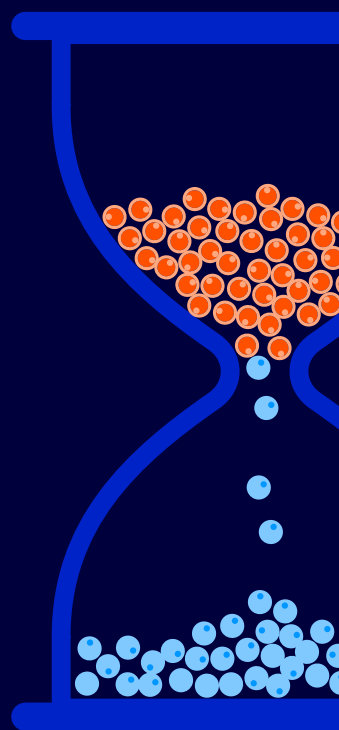
Actor Portrayal

Autoimmune T1D is progressing and you might not even know it

Type 1 diabetes (T1D) is a lifelong, progressive autoimmune disease. Anyone can develop T1D at any age, but certain factors, such as a family history or specific autoimmune conditions, can increase the risk.

With T1D, the body's immune system mistakenly attacks insulin-producing cells in the pancreas, called beta cells. In the early stages of T1D (Stage 1 or Stage 2), beta cells are already under attack—but you or your loved one may not even know it, as symptoms are not present.

As more and more beta cells are attacked, T1D progresses to a point where symptoms become noticeable. At this point, serious complications may happen, and daily insulin injections may become necessary (Stage 3).



IMPORTANT SAFETY INFORMATION

What is the most important information I should know about TZIELD?

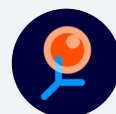
TZIELD may cause serious side effects. These include:

- **Cytokine release syndrome (CRS).** Signs and symptoms may start during the first 5 days of TZIELD treatment and could include fever, nausea, feeling tired (fatigue), headache, muscle and joint pain, or increased liver enzymes in your blood. Tell your healthcare provider right away if you develop any signs and symptoms of CRS during treatment with TZIELD

TZIELD is changing the possibility of T1D treatment

Managing T1D is no longer just about waiting for symptoms to appear. If given at the right time, TZIELD offers an opportunity to act while the body is still producing its own insulin.

Here's how it works:



TZIELD may work by slowing down the damage to some insulin-producing beta cells inside the body.



By potentially providing some protection to these cells, TZIELD could allow your or your loved one's body to keep making enough of its own insulin naturally, which may give more time before daily insulin injections are needed.

Why act now?

The window to treat with TZIELD can be short.

If you or your loved one has been screened with an autoantibody (AAb) test and tested positive for at least two T1D-related autoantibodies, and blood sugar levels are outside the normal range (dysglycemia), that means you or your loved one is in the stage before becoming insulin-dependent (Stage 2).

This is when TZIELD, a treatment used to delay the onset of insulin-dependent T1D (Stage 3), may be an option. Acting now, before the disease progresses and the pancreas can no longer do its job of producing enough insulin, could make a meaningful difference.



Having a conversation with your or your loved one's doctor is the best way to decide if TZIELD is the right next step.

Please see additional Important Safety Information throughout and full [Prescribing Information](#), including [Medication Guide](#).

A chance to delay insulin dependence

With 2 weeks of TZIELD, people had a median* of 4 years[†] before the onset of insulin-dependent type 1 diabetes

TZIELD significantly delayed the onset of insulin-dependent T1D compared to placebo

4 years

TZIELD

2 years

Placebo



TZIELD could offer more time—time without the need for daily insulin injections, time to learn about eventual symptoms and possible complications while building the right care team, and time to prepare for the changes that come with daily diabetes management.

*Median is the middle number in a group of numbers arranged from lowest to highest.

[†]The clinical trial included 76 people in the stage right before they become insulin-dependent (Stage 2 T1D). 44 received TZIELD and 32 received placebo. People were followed until they were diagnosed with insulin-dependent T1D (Stage 3). The median* amount of time that people were followed was 51 months (just over 4 years). People not diagnosed with insulin-dependent T1D were followed for different periods of time.

Your results may vary.

Please see additional Important Safety Information throughout and full [Prescribing Information](#), including [Medication Guide](#).



Tziield[®]
(teplizumab-mzwv)
Injection | 2 mg/2mL

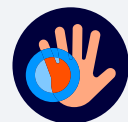
*"Having more time before becoming insulin-dependent means less time dealing with the hassles of daily insulin injections associated with insulin-dependent T1D."**

– **Cassandra, real TZIELD patient**

*There is no data to suggest that TZIELD will have any effect on these outcomes. Individual results may vary.

TZIELD has a well-established safety profile grounded in 10+ years of clinical research

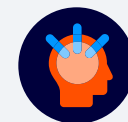
The most common side effects of TZIELD include:



Rash



Decrease in
white blood
cell counts



Headache

TZIELD may cause cytokine release syndrome and a decrease in your white blood cell counts, which can be serious. **Tell your doctor right away if you develop fever, nausea, tiredness, headache, rash, or muscle and joint pain.**

Your doctor will prescribe oral medications for the first 5 days of treatment, which may help reduce symptoms of cytokine release syndrome. For those who experienced a decrease in white blood cell count, these levels typically began to recover after the 5th day of treatment and returned to pre-treatment levels within 2 weeks of completing infusions.

Tell your doctor before getting a vaccine, as TZIELD may affect how well it works.

These are not all the possible side effects of TZIELD. Talk to your doctor or healthcare team for more information or medical advice about side effects.

IMPORTANT SAFETY INFORMATION (cont'd)

What is the most important information I should know about TZIELD?

TZIELD may cause serious side effects. These include:

- **Decrease in white blood cells.** TZIELD may cause a decrease in a type of white blood cell called lymphocytes. A decrease in white blood cells is a serious, but common side effect that can affect your body's ability to fight infections. A decrease in white blood cell counts can happen after your first dose. Your white blood cell counts will start to go back to normal after your fifth dose of TZIELD. Some people may develop longer and more severe decreases in lymphocytes

2 weeks of treatment could help **redefine** the journey ahead

TZIELD is a single course of treatment

A care team will administer TZIELD as an intravenous (IV) infusion in the arm. Infusions are:

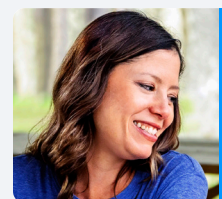
- Given once a day, for 14 days in a row
- At least 30 minutes long, plus setup and monitoring time

Your or your loved one's doctor will do blood tests to check your liver and complete blood counts before and during treatment.

Flexible options to receive care

Site-of-care options for TZIELD infusions may vary depending on location and availability. A doctor will work with you or your loved one to determine the most suitable option, taking into account individual circumstances, preferences, and insurance coverage. Site-of-care options include:

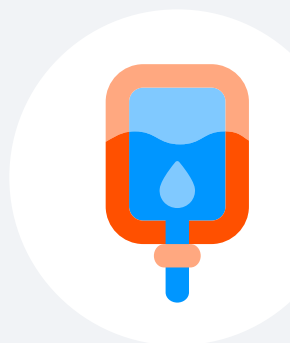
- Infusion center or doctor's office
- At home
- Combination of both (hybrid)



"My doctor put me in touch with TZIELD COMPASS, which helped line up everything and made the process feel very, very easy."

– Katie, real TZIELD patient

Please see additional Important Safety Information throughout and full [Prescribing Information](#), including [Medication Guide](#).



A community of support awaits

TziELD[®]
(teplizumab-mzwv)
injection | 2 mg/2mL



Amanda & William, TZIELD caregiver & patient

Talk with someone who's been there

The TZIELD Mentor* Program connects you with real people who have experienced TZIELD treatment firsthand. Patients and caregivers are here to answer questions, share personal insights, and provide one-on-one support at every stage of your or your loved one's TZIELD treatment journey.



Call 1-844-778-2246 Monday through Friday, 8 am–8 pm ET today to schedule a call with a mentor who truly understands.

*TZIELD Mentors are not healthcare professionals and will not provide medical advice. For medical advice, please consult your or your loved one's doctor.

Real people. Real stories. Real inspiration.

TZIELD Patient Ambassadors are patients and caregivers living with T1D who have personally experienced the impact of TZIELD treatment.

Watch their inspiring stories and hear about their treatment experience.

Discover what TZIELD could mean for your own journey.

[TZIELD.com/stories](https://tziELD.com/stories) →

IMPORTANT SAFETY INFORMATION (cont'd)

What is the most important information I should know about TZIELD?

Your healthcare provider will do blood tests to check your liver and your complete blood counts before you start treatment and during treatment with TZIELD. During and after your treatment with TZIELD, your healthcare provider will check for serious side effects, as well as other side effects, and treat you as needed. Your healthcare provider may temporarily or completely stop your treatment with TZIELD, if you develop liver problems, have a serious infection, or if your blood counts stay too low.

Guiding you through the treatment journey

TzielD[®]
COMPASS

Molly & Aubri, TZIELD caregiver & patient

TZIELD COMPASS is a dedicated patient support program designed to guide and support at every step of the treatment journey, making the TZIELD experience as seamless and reassuring as possible.

With TZIELD COMPASS, one call connects to the support needed for treatment. TZIELD COMPASS can:

- Explain insurance coverage and what it means for treatment
- Share information about financial assistance options
- Help identify infusion locations based on insurance and other needs
- Educate about what to expect during infusions and how to prepare
- Provide ongoing check-ins throughout treatment
- Answer questions about the TZIELD COMPASS program and its resources



Let TZIELD COMPASS provide guidance through the journey. Call 1-844-778-2246 Monday through Friday, 8 am–8 pm ET.

Financial support made simple

TzielD[®]
(teplizumab-mzwv)
Injection | 2 mg/2mL

As little as \$0 copay may be available

With the TZIELD Copay Program, eligible, commercially insured patients may pay as little as \$0 for treatment.*

The TZIELD COMPASS team can provide details about this program and help you explore other available financial assistance options if you do not qualify.

You may be eligible for the TZIELD Copay Program if you:

- Have commercial insurance
- Have a TZIELD prescription
- And are a resident of the 50 United States, the District of Columbia, Puerto Rico, Guam, or the US Virgin Islands; and are a patient or caregiver aged 18 years or older

*The TZIELD Copay Program is not valid for prescriptions paid, in whole or in part, by Medicaid, Medicare, VA, DOD, TRICARE, or other federal or state programs including any state pharmaceutical assistance programs. Not valid where prohibited by law, taxed, or restricted. Sanofi reserves the right to rescind or amend this offer, eligibility, and terms of use at any time without notice. Upon registration, patients receive all Program details.

Eligibility requirements and terms and conditions apply. See [Tzielhcp.com/CompassTerms](https://tzielhcp.com/CompassTerms) for more information.



"Within a day of me reaching out to TZIELD COMPASS, I had a phone conversation with a Navigator, and she was so helpful."

- John, real TZIELD patient

Please see additional Important Safety Information throughout and full [Prescribing Information](#), including [Medication Guide](#).

Take the conversation with your or your loved one's doctor further

Deciding on the right treatment often takes more than one conversation. Use the questions in this guide to have a deeper discussion with your or your loved one's doctor and feel confident about your next steps.



Actor Portrayal



Build on your initial discussion with these key questions:

- What happens if I decide to wait before I start TZIELD?
- Can you explain how TZIELD helps slow down the damage to insulin-producing cells in the pancreas?
- What are the pros and cons of each site-of-care option?
- Which infusion method (daily IV, midline, or PICC)* would be best for my treatment, and what are the benefits and considerations of each option?
- What can we do before treatment to prepare for any side effects?
- How will my care team monitor side effects?
- Does TZIELD interfere with other medicines or vaccines?
- Will I be able to carry on with normal activities while I'm receiving treatment with TZIELD?
- Is there anything I should bring with me to each infusion appointment?
- Will I need additional treatments or follow-ups after completing TZIELD?

*IV=intravenous; PICC=peripherally inserted central catheter

Please see additional Important Safety Information throughout and full [Prescribing Information](#), including [Medication Guide](#).

Has your doctor prescribed TZIELD?

Your doctor is your go-to source for information about TZIELD and will be by your side throughout your treatment journey.

Starting your journey

Your doctor prescribes TZIELD, and you take the next step by enrolling in the TZIELD COMPASS Patient Support Program.

Here's how it works:

- You or your doctor can download the enrollment form at TZIELD.com
- Your doctor will help complete the form with your input and submit it.
- Don't forget to provide your eConsent to finalize your enrollment.



What happens next?

Once you're enrolled, the TZIELD COMPASS team will reach out to you within 1 business day.

Have questions about cost and coverage or the infusion process?

Whether you're new to infusions or need more details, TZIELD COMPASS is here to guide you every step of the way.



For more information about TZIELD COMPASS, call 1-844-778-2246 Monday through Friday, 8 am–8 pm ET.

Please see additional Important Safety Information throughout and full [Prescribing Information](#), including [Medication Guide](#).



*"Since Aubri's infusion, her blood sugar has remained under control. She's still not at the stage where she's insulin-dependent, and she gets to live like other 13-year-olds for a little while longer."**

– Molly, parent of Aubri, real TZIELD patient

*There is no data to suggest that TZIELD will have any effect on these outcomes. Individual results may vary.

IMPORTANT SAFETY INFORMATION (cont'd)

What should I tell my healthcare provider before receiving TZIELD?

Before or after receiving TZIELD, tell your healthcare provider about all your medical conditions, including if you:

- have a serious infection or an infection that does not go away or keeps coming back
- have recently received or are scheduled to receive an immunization (vaccine). TZIELD may affect how well a vaccine works. Tell your doctor that you are receiving TZIELD before receiving a vaccine
- are pregnant or plan to become pregnant. TZIELD may harm your unborn baby. Do not receive TZIELD during pregnancy and at least 30 days before a planned pregnancy
- are breastfeeding or plan to breastfeed. It is not known if TZIELD passes into your breast milk and if it can harm your baby. Talk to your healthcare provider about the best way to feed your baby if you receive TZIELD

Tell your healthcare provider about all the medicines you take, including prescription and over-the-counter medicines, vitamins, and herbal supplements.

What are the possible side effects of TZIELD?

The most common side effects of TZIELD include:

- rash
- leukopenia (decrease in white blood cell counts)
- headache

These are not all of the possible side effects of TZIELD. Talk to your healthcare provider for more information, and tell them about any side effects you notice. You may report side effects to the FDA at www.fda.gov/medwatch or 1-800-FDA-1088.

Tzi^{ield}[®]
(teplizumab-mzwv)
Injection | 2mg/2mL

Don't wait
for your
symptoms
to appear

Learn more at TZIELD.com

TZIELD is the registered trademark of the Sanofi Group.
© 2025 Sanofi. All rights reserved. MAT-US-2501586-v1.0-04/2025
Intended for U.S. residents only.

sanofi